

# HP Data Protector software Manager of Managers

Data sheet



For multi-site operations, the Data Protector Manager-of-Managers (MoM) allows distribution of control to local administrators while maintaining the ability to set overall policies and monitoring the entire enterprise backup environment from a central point.

Business data has spread across distributed and remote locations, placing enormous pressure on those responsible for recovery and protection. Configuring and managing backups of these heterogeneous environments in today's 24/7 globalized world is an issue for many companies. This fundamental challenge is becoming ever more pressing as the volume of data that organizations need to manage explodes every year. The HP Data Protector software functionality has been designed to simplify this task and to offer optimum flexibility with greater control, enabling customers to manage backup environments based on their organization's unique needs.

For multi-site operations, the HP Data Protector software MoM lets you distribute control to local administrators while maintaining the ability to set overall policies and monitor the entire enterprise backup environment from a central point. As a result, corporate policies can be implemented without diminishing local control and responsibility, while data protection and storage management costs do not change.

## What is a MoM?

Figure 1 shows multiple Data Protector "Cells," which are also referred to as domains. Each Cell has one Cell Manager system where the essential Data Protector software is installed and from which all backup and restore activities are managed.

Several Data Protector Cells can be grouped together, configured and managed from a central Cell. The Cell Manager of this central Cell is the MoM.

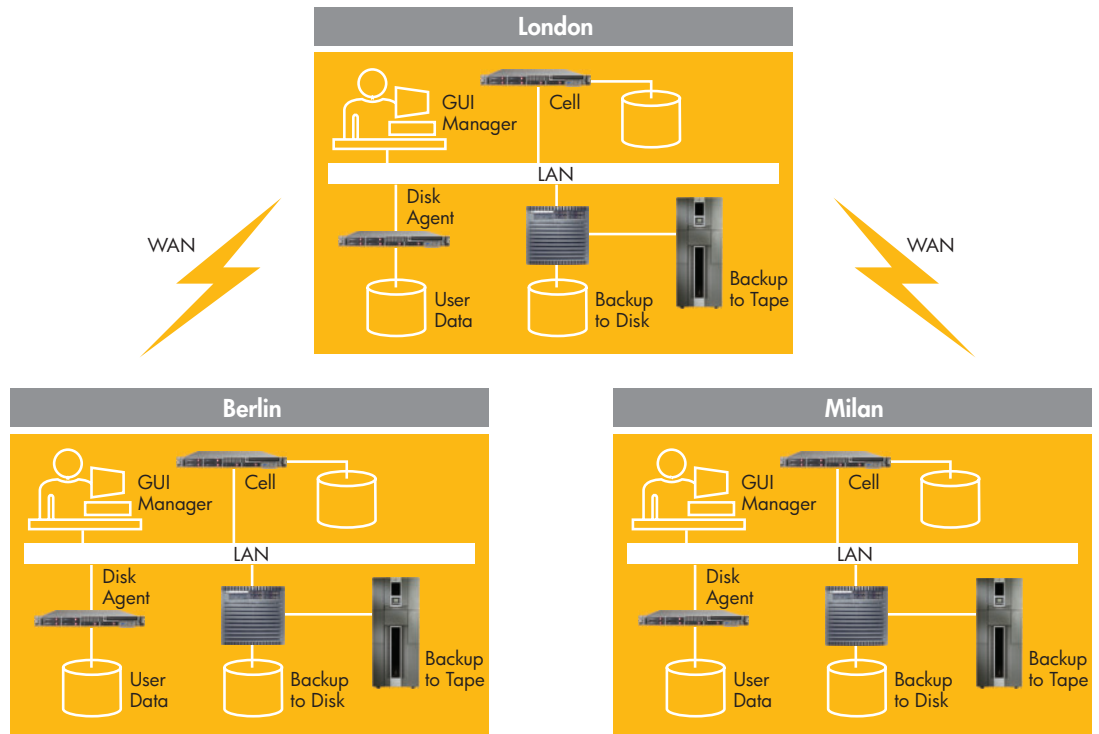
Using the MoM interface allows you to scale a Data Protector backup environment to include hundreds of Disk Agents and Media Agents. In this way, the Cell Manager of the central Cell becomes the MoM, and the Data Protector Cells become the MoM clients.

The MoM enables virtually unlimited growth of your backup environment. New cells can be added or existing ones split. A MoM environment does not require a reliable network connection from Data Protector Cells to the central MoM Cell, because only controls are sent over the long distance connections, and backups are performed locally within each Data Protector Cell.

You may decide to split large environments into multiple Cells for a number of reasons:

- Geographical grouping of systems
- Logical grouping of systems; for example, departments
- Slow network connection between some systems
- Performance considerations
- Separate administrative control

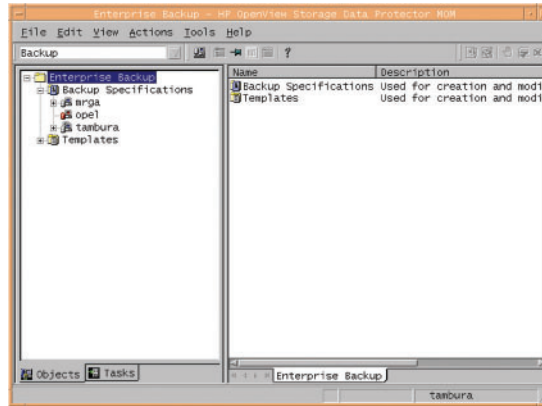
**Figure 1:**  
Data Protector Cells managed from a central point



## Features and benefits

- Centralized or remote management:** Enables administrators to centrally manage an enterprise environment consisting of several Data Protector Cell Managers. The MoM system administrator performs configuration, media management, monitoring and status reporting tasks for the whole enterprise from a single console. With MoM, managing many Data Protector Cell Managers is as convenient as managing just one. IT service providers can administer larger clients' environments without adding employees or increasing operational costs.
- Built-in software distribution:** Enables remote, simultaneous installation and maintenance of backup clients across the network, eliminating the need to individually install software on each system.
- Centralized licensing:** Enables you to configure centralized licensing for the whole MoM environment. All licenses are installed and kept on the MoM Manager system and can be allocated to specific Cells as needed. Centralized licensing simplifies license management. Licensing administration is performed by the MoM administrator for all cells in the MoM environment. This also includes the distribution and moving of the licenses.
- Centralized Media Management Database (CMMDB):** The CMMDB is the result of merging MMDBs from several Cells in the MoM environment. It allows sharing of devices and media across several Cells in an MoM environment. This makes devices of one Cell accessible to other Cells. One Cell can control the robotics, serving the devices that are connected to systems in other Cells. The CMMDB must reside in the MoM Cell. In this case, a reliable network connection is required between the MoM Cell and the other Cells. Note that it is optional to centralize the Media Management Databases into the CMMDB.
- Sharing libraries:** With the CMMDB, libraries can also be shared between Cells. One Cell can control the robotics, serving several devices that are connected to systems in different Cells. Even the Disk Agent to Media Agent data path can go across remote Cells.
- Enterprise reporting:** The Data Protector MoM can generate reports on a single-Cell basis as well as for the entire enterprise environment.

**Figure 2:**  
HP Data Protector software MoM GUI.



- **Scalable:** Businesses can easily adjust to changing requirements according to size, performance, and functionality. The flexible architecture allows companies to expand the backup environment as the enterprise grows.
- **Consistency:** Company-wide policy definition and deployment can be done from one place. With the MoM functionality, it is possible to centrally define and download backup and media policies to local environments.
- **Web reporting:** Administrators can monitor or be notified of the results of the backup through web reporting. Web reporting capabilities allow operators to easily view the status of the various backup jobs or to customize reports from any web-accessible location.
- **Improved ROI:** Enables the use of existing resources, while allowing better capacity planning of storage and IT staff.

## HP Services

HP Services has end-to-end, industry-leading expertise in delivering solutions that help you improve your business agility. From initial assessment and design to technical integration and ongoing support, HP Services can be your single point of contact and accountability.

HP related services:

- **HP Backup and Recovery Solution Service**—integrates your backup and recovery solution into an existing or new storage infrastructure. The HP BRSS service provides end-to-end management of your entire integration process—including all planning, implementation, post-implementation reporting, and testing activities—reducing the operational impact and risks associated with backup and recovery management integration.
- **Other HP Storage Management Services** include:
  - Data Replication Solution Service
  - Disaster Tolerant Management Service
  - Storage Essentials Service
  - Electronic Vaulting Service for Enterprises
- **HP Care Pack Services**—a comprehensive portfolio of services for maintaining the highest levels of IT availability.
  - Critical Service
  - Proactive 24 service
  - Support Plus 24 service
- **Instant Support Enterprise Edition (ISEE)**—remote monitoring and support solution for your servers, storage, and networks.
- **Business Continuity Services**—protect and reduce disruption to IT infrastructure and associated business processes against site outages, disasters and environmental events.

Across the globe, enterprise customers rely on HP Services to design, deploy, manage, and support the IT systems that run their businesses. HP Services capabilities cover consulting and integration, outsourcing, and support services. With more than 69,000 services professionals operating in 170 countries, acknowledged technology leadership, and a heritage of innovation in services, HP Services can point to an extensive track record of helping customers improve their ability to support their changing business needs.

For further details, contact your HP sales representative or visit: [www.hp.com/hps/storage](http://www.hp.com/hps/storage).

## Warranty and included services

HP warrants only that the software media can be free of physical defects for a period of ninety (90) days from delivery. For more information about HP Global Limited Warranty and Technical Support, visit: [www.hp.com/products/storageworks/warranty](http://www.hp.com/products/storageworks/warranty)

## HP Care Pack services

HP Care Pack Services offer upgraded service levels to extend and expand your standard product warranty with easy-to-buy, easy-to-use support packages that help you make the most of your hardware and software investments. They let you choose the support levels that meet your business requirements, from basic to mission-critical. They help you contain total cost of ownership.

HP Care Pack warranty extensions can be purchased along with HP products to cost-effectively upgrade or extend your warranty. For many products, post-warranty HP Care Pack Services are available when your original warranty has expired. For more information on these services, contact your local HP sales representative, authorized HP business partner, or visit: [www.hp.com/go/storage/carepacks](http://www.hp.com/go/storage/carepacks)

## Additional HP support services

HP Services provides a broad spectrum of services to commercial and enterprise customers, including performance and availability services such as proactive mission-critical services, as well as support management services for deployment of the entire IT infrastructure, including HP and multivendor environments. For more information on these services, contact your HP sales representative, authorized HP business partner, or visit: [www.hp.com/hps/storage](http://www.hp.com/hps/storage)

## Education services

HP offers a variety of training methods to fit your needs including traditional instructor-led courses at one of our 120 training centers worldwide, onsite training customized to your needs, in your facility, or even Remotely Assisted Instruction Learning that combines the superb traditional classroom training (including its live instructor and labs) with the superb online training (no traveling required). And if you like learning on your own schedule, at your own pace, make use of e-learning opportunities on the award-winning HP IT Resource Center, a "learning community" with extensive on-demand resources that can be accessed 24x7. For more information on these services, contact your HP sales representative, authorized HP business partner, or visit: [education.hp.com/curr-storsan.htm](http://education.hp.com/curr-storsan.htm).

## Financial services

HP Financial Services provides innovative financing and financial asset management programs to help customers cost-effectively acquire, manage, and ultimately retire their HP solutions. For more information on these services, please contact your HP sales representative or visit: [www.hp.com/go/hpfinancialservices](http://www.hp.com/go/hpfinancialservices)

## For more information

For more information on HP Data Protector software, please contact your HP representative or visit [www.hp.com/go/dataprotector](http://www.hp.com/go/dataprotector).

For ordering information, please see QuickSpecs: [www.hp.com/go/QuickSpecs](http://www.hp.com/go/QuickSpecs)

© 2007 Hewlett-Packard Development Company, L.P. The information contained herein is subject to change without notice. The only warranties for HP products and services are set forth in the express warranty statements accompanying such products and services. Nothing herein should be construed as constituting an additional warranty. HP shall not be liable for technical or editorial errors or omissions contained herein.

To learn more, visit [www.hp.com/go/dataprotector](http://www.hp.com/go/dataprotector)

4AA0-8520ENW Rev. 1, December 2007