

# Symantec Enterprise Vault™ for Lotus Domino®

Store, Manage and Discover Critical Business Information

---

## Overview

### *Industry-leading email archiving for Lotus Domino*

With the recognition that email has become as mission critical as any other IT system, most organizations are evaluating their overall policies and systems for email management. Across many industries and public sector organizations, IT professionals are being called on to address the three most common management concerns regarding email: resource management, retention management, and discovery management.

Given these challenges, tens of thousands of enterprises across the world are implementing email archiving software solutions. These systems typically allow IT organizations to control email storage costs, while giving end users more user-friendly email storage and search capabilities. Archiving software also provides legal departments with a consistent system for retaining and finding email messages across the enterprise.

Symantec Enterprise Vault provides a software-based intelligent archiving platform that stores, manages, and enables discovery of data within your Lotus Domino messaging environment. Because not all data is created equally, Enterprise Vault utilizes intelligent classification and retention technologies to capture, categorize, index, and store target data. These comprehensive capabilities enable IT organizations to enforce policies and protect

corporate assets while reducing storage costs and simplifying management. Enterprise Vault also includes specialized applications such as Discovery Accelerator and Compliance Accelerator that mine archived data to support legal discovery, content compliance, knowledge management, and information security initiatives.

---

## Features and benefits

- Automatic mailbox management frees users from quota frustrations without compromising Domino performance and reliability.
- Storage optimization eliminates unnecessary storage consumption, increasing stability and efficiency of user .nsf databases.
- Protection against theft and disaster reduces the risk of exposure of private email archives.
- Secure access controls to protect the privacy of corporate and user information, facilitate faster backup of Domino, and improve recovery time in a disaster.
- Archiving enables the retrieval of email and other business content to meet legal and regulatory compliance requirements.
- Powerful indexing and easy-to-use search features help users quickly find and retrieve important information.



### Automatic mailbox management

Give your users mailboxes of virtually unlimited size while controlling the growth of storage resources. Administrator-defined policies automatically archive individual email messages and attachments from Domino into Enterprise Vault. This enables Domino to focus on the dynamic handling of newer information, while Enterprise Vault software acts as a long-term repository for older information. Domino server performance can be dramatically improved, and users can enjoy instant access to their email without the associated cost and management issues.

---

### Storage optimization

Enterprise Vault can help your organization eliminate the need for .nsf file creation as a result of stringent mailbox quotas as a means to control storage consumption and ultimately storage costs. Giving email users a virtual bottomless mailbox using archiving policies based on mailbox quota utilization, attachment size, or actual message age, IT is able to more effectively govern the amount of data in their message store and automatically archiving older messages. By eliminating mailbox quotas you effectively eliminate the need for .nsf files which will inevitably take up storage space, Enterprise Vault helps reduce storage costs by eliminating the need to create and store these files from the beginning. It also ensures that critical corporate information from the email system is under IT control in a searchable, centralized repository.

### Protection against theft and disaster

In many companies, archiving has quickly moved beyond a Lotus administrator's pilot project for reducing Domino storage to an integral part of an information lifecycle strategy. This often requires many different types of administrators to manage parts of the archive. Enterprise Vault provides access controls to protect the security and privacy of individual email users while allowing authorized users to search across mailboxes. Enterprise Vault also provides real-time performance metrics, reports, and analytics to help ensure that the application and the archive are running as expected.

By setting flexible archiving policies within Enterprise Vault, you can significantly reduce your Domino message store by as much as 90 percent. Enterprise Vault moves email from the Domino server to a secure, central repository that is accessible by authorized users. This decreases the amount of Domino data that must be backed up and potentially recovered in the event of failure or disaster. It also reduces the time required to rebuild and reload the information after a disaster, enabling you to get your systems up faster and your company back in business sooner.

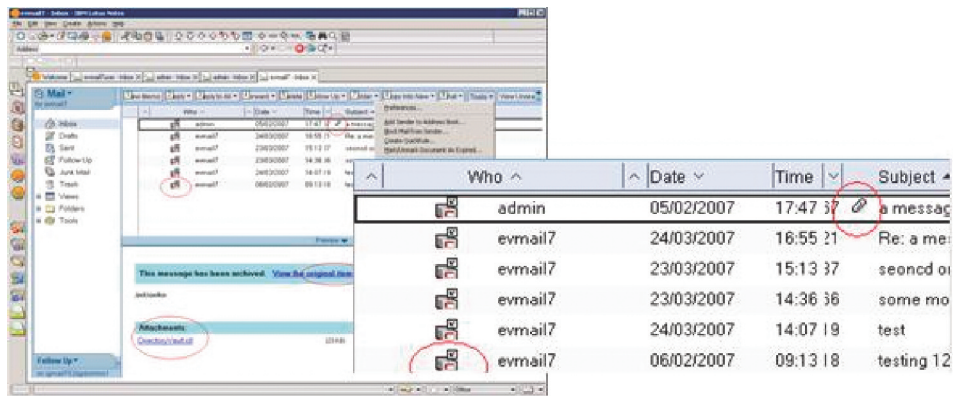


Figure 1. Enterprise Vault for Domino provides seamless integration for Lotus Notes users.

### Seamless end-user experience

The true power of Enterprise Vault software lies in the way it presents archived content to end users. Indexing of archived email and attachments, combined with seamless integration with Notes, Domino Web Access, and Domino, allows users to quickly and easily search for and retrieve information. Shortcuts and Web-based search functions keep users instantly in touch with all archived email content on both the mailbox level and the organizational level. Whether a search is performed for large volumes of email or simply to locate a single item, the seamless presentation of archived data is an outstanding feature of Enterprise Vault software.

### NSF migration

Enterprise Vault software allows organizations to migrate and archive email content from end-user created .nsf files into the archive repository.

Centralizing user search and accessibility to this data enables the organization to significantly reduce the amount of data stored in local .nsf files and their replicants. Reducing database size improves performance and eases maintenance of both Notes clients and Domino servers.

As Enterprise Vault ingests Domino content, Domino storage growth will slow, stop, and then likely reverse as the scales tip by removing older content and putting it into a more efficient archive.

#### Key benefits include:

- Reduce database size and improve performance on Domino servers and Notes Clients
- Eliminate multiple copies of documents and their attachments to ease backup and maintenance burden due to data accumulation
- Effective means to efficiently reintroduce legacy data to the environment under IT control

### Offline Vault—laptop access

Offline Vault provides laptop access to archived email even when not connected to the corporate network. Requiring low bandwidth, Enterprise Vault software can be configured to provide users with a local Vault stored on their PC hard drive. When a disconnected user tries to access an archived item via a shortcut, this item will be retrieved from the local Vault, promoting access to important content wherever the user is located. At the same time, the user's email is still archived to the corporate archive, so it is not vulnerable to loss or damage.

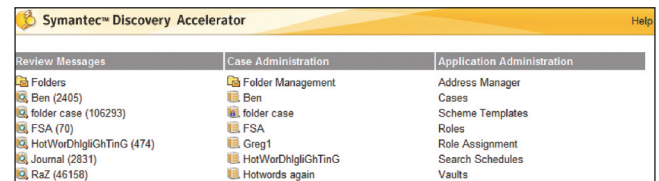
### Archiving for legal and regulatory compliance

Legal and governmental bodies are increasingly requiring organizations to find, monitor, or produce email, files, and messages for regulatory or legal actions. Enterprise Vault provides a centralized archive to be searched for meeting compliance, investigation, or legal discovery needs. It virtually eliminates the need for IT staff to scour the organization to find stored information.

Designed to support the U.S. Federal Rules of Civil Procedure, Enterprise Vault Discovery Accelerator provides powerful search, production, and legal hold capabilities to help ensure that email, files, instant messages, and other business critical content can be produced and used as evidence.

Focused on compliance, Compliance Accelerator provides the tools necessary to proactively search, sample, and

review archived email according to compliance policies. The whole process is tracked, and extensive reporting enables you to demonstrate adherence to corporate and regulatory compliance policies.



**Figure 2. Discovery Accelerator facilitates the search, review and preservation process for electronic discovery of archived content.**

### Complete Domino protection

Organizations that already have Symantec Mail Security for Domino, Symantec IM Manager for Sametime, or Backup Exec for Domino can add value with Enterprise Vault. It helps ensure that the data you want in your enterprise stays in your enterprise for as long as you need it—and that you will have an effective way of finding it when you need it. We call this information risk management.

Symantec Information Foundation is a product suite that enables information risk management by delivering industry-leading protection against risks to enterprise messaging and collaboration systems, and helps reduce the cost of data retention and e-discovery. This integrated product suite helps protect against data leakage, spam, viruses, and other malicious threats while providing centralized archiving, audit, and discovery for enterprise information.

## Data Sheet: Data and System Protection Symantec Enterprise Vault for Lotus Domino

Symantec Information Foundation incorporates Symantec's world-class antivirus, antispam, content filtering, archiving, retention, discovery, and policy management technologies, helping to protect email, instant messaging, portal servers, file systems, and other sources of enterprise collaboration. Symantec Information Foundation 2007 simplifies information risk management and helps lower total cost of ownership by providing information protection and control from one trusted vendor at an all-inclusive price.

### **System requirements**

**Processor:** Dual 2.8 Ghz

**Memory:** 4GB of RAM

**Operating System:** Windows 2000 Server SP1 or later

**Note:** System requirements are dependent on which Enterprise Vault licensed features are to be deployed. For more details of minimum prerequisite software, please refer to the Symantec Enterprise Vault Compatibility Charts <http://support.veritas.com/docs/276547>

### **More information**

*Visit our Web site*

[www.symantec.com/enterprisevault](http://www.symantec.com/enterprisevault)

*To speak with a Product Specialist in the U.S.*

Call toll-free 1 (800) 745 6054

*To speak with a Product Specialist outside the U.S.*

For specific country offices and contact numbers, please visit our Web site.

### *About Symantec*

Symantec is a global leader in providing security, storage, and systems management solutions to help businesses and consumers manage their information. Headquartered in Cupertino, Calif., Symantec has operations in more than 40 countries. More information is available at [www.symantec.com](http://www.symantec.com).

### *Symantec World Headquarters*

20330 Stevens Creek Boulevard

Cupertino, CA 95014 USA

+1 (408) 517 8000

1 (800) 721 3934

[www.symantec.com](http://www.symantec.com)

