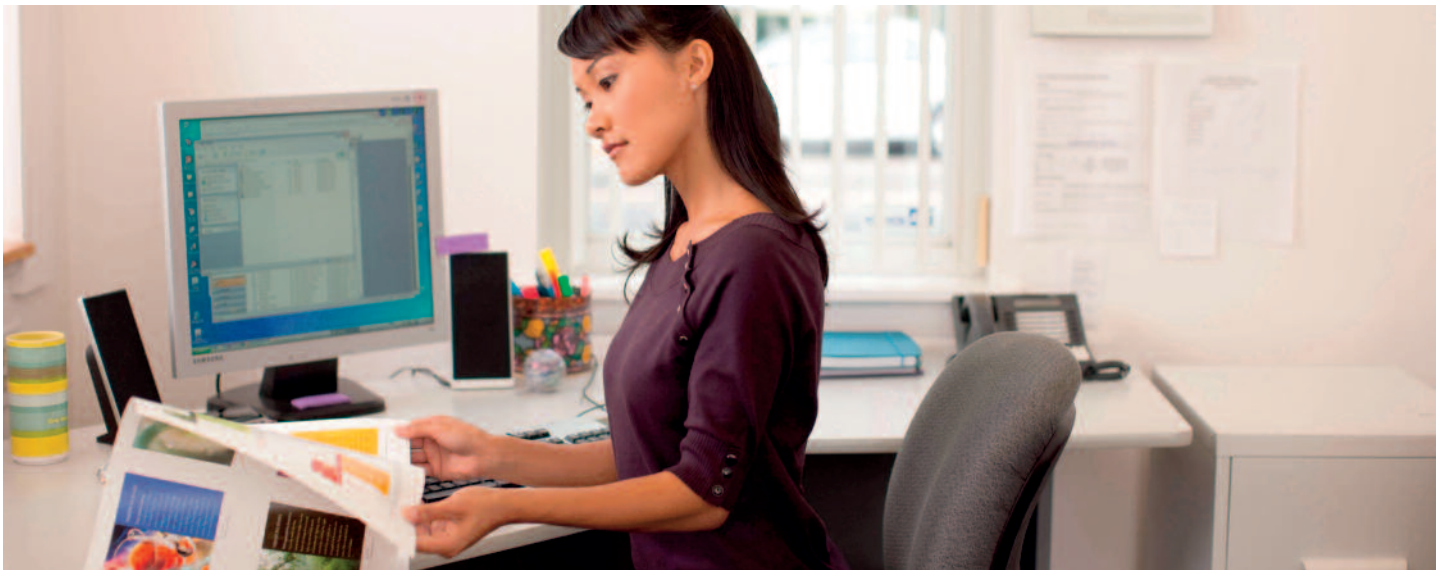




Xerox® Colour 550/560 Printer
Productivity plus outstanding colour
for all environments.

Productivity, scalability and professional image quality, all-in-one.

The Xerox® Colour 550/560 Printer integrates benchmark image quality, expansive media handling and professional finishing with efficient, secure and flexible colour workflows to deliver an affordable print solution for any environment.



Gain new business and keep high-value colour printing in-house.

- Benchmark 2400 x 2400 dpi image quality with excellent colour consistency.
- Emulsion Aggregation (EA) Low Melt Toner gives all your applications a smooth, offset-like finish with outstanding sharpness and uniformity, crisp text and bright highlights.
- Enhanced Gloss Mode setting produces output with a glossy lustre.
- Digital speed, easy set-up and automated workflows accomplish the quick turnarounds and cost-effective short runs customers expect.

Flexibility to create a wider range of applications.

- Expansive media range lets you print everything from postcards to posters.
- Handles both coated and uncoated stock, up to 300 gsm.
- Inline finishing options offer a professional polish with stapling, hole-punching and folding for presentations, brochures, reports and newsletters.
- Choice of additional print servers allows you to boost colour management and streamline labour-intensive processes.
- Variable data capabilities let you capitalise on personalised applications for direct mail.

Get productivity from start to finish.

- Four standard internal paper trays plus additional feeding options optimise the number of sheets in your print run.
- Swift printing of 50/55 ppm and 60/65 ppm, colour/black and white.
- Load-while-run paper and toner.
- Auto-duplexing up to 176 gsm cover coated and uncoated eliminates time-consuming manual intervention.
- An array of Customer Replaceable Units puts you in control of basic maintenance.
- Smart eSolutions® and MeterAssistant® collect and analyse information that is sent to Xerox support for easy, accurate billing.

Streamline processes, save time and simplify device management.

- **Scan, print, copy, fax and route files, all at once.** Concurrent operation maximises productivity, letting multiple users perform different tasks simultaneously.
- **Never wait for a critical print job.** The Print Around feature holds a job in need of resources (such as special paper size) and prints the next job in the queue.
- **Programme finished documents right from your desktop.** Bi-directional print drivers make many capabilities that are available to walk-up users available at the desktop as well.
- **Enhanced productivity with bi-directional communication.** Users can see from their PC if a large job is in the print queue or when supplies are running low.
- **Superior scanning.** Create text-searchable files at the device for easy retrieval – compression technology reduces network load for fast transmission.
- **Automate common workflows.** Create job flow sheets to automatically route documents to predefined locations, including email, fax destinations and FTP/SMB sites.
- **Remotely manage your device.** CentreWare® IS Embedded Web Server automates installation, troubleshooting feature set-up and upgrading.

Manage costs and save money.

- Customise print driver settings for economy and efficiency. Set two-sided printing, choose N-up for printing multiple pages on a single sheet as your default, or adjust settings for specific applications.
- Manage and track device usage with the internal Auditoron, that sets limits on a device's features for analysis and billing purposes. Xerox Standard Accounting provides reports for greater cost control.

Implement enterprise security solutions without skilled IT know-how to safeguard your critical information.

- Secure Print keeps documents private by holding print jobs in the queue until the user enters the password.
- Password protected PDFs require a password to open and view a sensitive scan.
- Data Security keeps information safe by encrypting resident data on the device and electronically erases images on the hard device.
- Full system Common Criteria (ISO15480) Certification at (EAL3) ensures the Xerox® Colour 550/560 Printer conforms to the most stringent security standards and regulations.



The Xerox® Colour 550/560 is easy on the environment.

- “Earth Smart” options at your print driver let you save paper (such as limiting banner pages or printing two-up) and save other resources, such as setting to print in draft mode as your default.
- EA Low Melt Toner delivers high print quality at a lower melting point, saving energy, and achieves better distribution of smaller particles for higher quality with less toner per page.
- Scan Preview lets you see how your results will look before printing or sending, saving paper and energy.
- Paperless faxing with LAN fax sends faxes directly from applications on your desktop. Incoming faxes can be viewed as thumbnail images on the user interface, so you print only what's important.

Productivity – simpler, smarter.

Simplicity leads to productivity. The Xerox® Colour 550/560 Printer simplifies the process of capturing, editing, managing and storing documents. Xerox® workflow solutions are the simplest way to connect people to the information and tools they need to get quality work done faster, more efficiently and effectively.



Xerox Secure Access Unified ID System®

Secure Access integrates with your existing employee ID badge solution, allowing users to unlock access to system features via badge proximity or swiping. Data can then be made available for tracking, accounting and regulatory purposes. Follow-You™ print allows you to send a document to a secure print queue and use your ID card to access the document for printing on any network printer equipped with Secure Access.

Equitrac Office®

Equitrac Office provides a secure, convenient, mobile print workflow while controlling costs and simplifying administration. It enables single sign-on access to devices and services, personal print queues to maximise document security and mobility, and rules to create cost-effective printer usage.

Productive, versatile workflow solutions with easy-to-use interface.

- Turn paper to digital information and deliver it to your desktop in your preferred format
- Keep intellectual property organised and secure with automated routing and delivery
- Manage device access and control costs
- Track and account for activity

Optional solutions include:

Xerox® Scan to PC Desktop®

Scan to PC Desktop bridges the gap between Microsoft Office documents, PDFs and paper. It allows you to customise the scanning menus on your Xerox® device directly from your desktop for personalised document capture and desktop document management.

Build your solution today and expand it tomorrow as your business grows.

Feeding Options: Add on as your productivity and media handling needs increase.

High Capacity Feeder – 2,000 sheets
A4 up to 220 gsm coated

- Great for long run reports, presentations, mailers, etc.

One- or Two-Tray Oversized High Capacity Feeder (OHCF) – 2,000 sheets
330 x 488 mm each tray, up to 300 gsm coated. Paper stabiliser minimises skew; roller system prevents misfeeds.

- Reliable feeding for large quantities of coated paper and enables SRA3 full bleed applications

Finishing Options: Scale up your inline finishing capabilities as your demands grow.

Simple Catch Tray

Offset Catch Tray

Advanced Finisher – Multiposition 50-sheet stapling and standard 2/4 hole punching for coated/uncoated paper.

Professional Finisher – Multiposition 50-sheet stapling and standard 2/4 hole punching plus bi-folding and saddle-stitch booklet making.

Light-Production Finishers – These versatile finishing options enable coated booklets, brochures and bi-fold mailers as well as stacking, stapling and hole punching. They also include an interposer input tray. Choose from a Light Production Finisher, Light Production Finisher with Booklet Maker or a Light Production Finisher with Booklet Maker and Folder.

Productivity and security are built in to your Xerox® Colour 550/560 Printer.

User Interface features 10" colour touch screen.

Copy at 50 colour, 60 black and white copies per minute, even duplex.

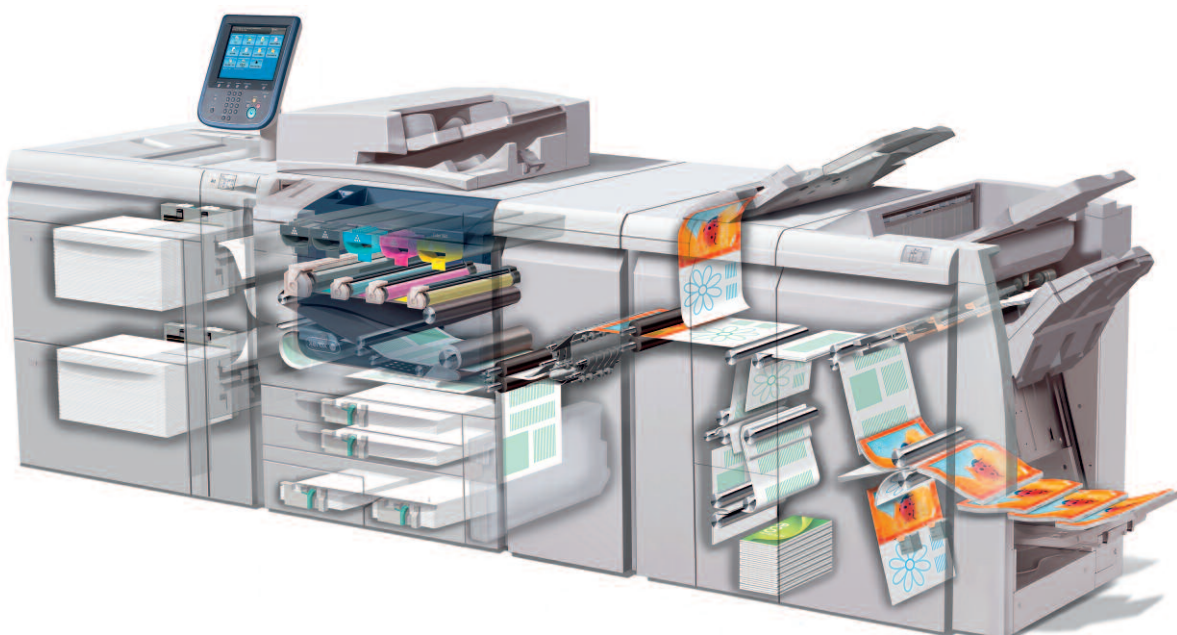
Fax via G3 or IP Fax (SIP).

Scan at high speed, both colour and monochrome, with data converted to several formats – that can be password protected – and sent using a variety of methods, including saved to PC, server USB media or sent as an email attachment.

Be Secure with integrated security features such as IP filtering, image overwrite, secure print, encrypted scan-to-email, authentication and IPv6 support, etc.

Plus, choose additional options such as:

Xerox® SMARTsend®, Xerox® Secure Access, Secure Watermark, Gigabit Ethernet



Server options to meet every need.

The Xerox® Colour 550/560 Printer offers a range of servers to fit your environment depending on your workflow, applications and preferences.

Add any of the following optional servers, depending on skill levels and business needs.



Xerox® Integrated Fierey® Colour Server

Get fast RIP speeds and great productivity while simplifying and streamlining your workflow by automating job submissions of repetitive job types with optional Hot Folders and Virtual Printers. Fierey ColorWise colour management tools produce precise, exact colour. And its basic variable data capabilities let you customise output with varying text, photos and graphics.

EX Print Server, Powered by Fierey®

You can produce effective marketing pieces with a wide range of output options, including automatic identification of job elements, eliminating the need to reprogramme jobs. Fierey ColorWise delivers high-quality colour fast and easy. Fierey Command Workstation reduces errors and waste. Supports Adobe PDF Print Engine, for a native, end-to-end PDF workflow.

CX Print Server, Powered by Creo® Color Server Technology

Advanced features and ease of use deliver excellent colour capability and quality expanding your range of services and business opportunities. Creo Color Server allows automated workflow for quick, error-free results.

Its superb colour output and management ensure customer-pleasing results. Built-in connectivity to Prinergy workflow for automated, hybrid workflows also supports Adobe PDF Print Engine 2 for a native, end-to-end PDF workflow.

Xerox® FreeFlow® Print Server

Delivering simple yet advanced colour management with Xerox® ConfidentColor technology, the FreeFlow Print Server enables you to deliver high-quality documents. It combines great features such as Xerox Consistent Colour Mode with advanced profiling technology and highly refined calibration techniques to deliver consistency time after time. Add support for Adobe PDF Print Engine, as well as production features such as job and queue management, and the FreeFlow Print Server gives you everything you need for outstanding colour output.

Create exciting new applications – easily finished inline.

The printing world is exploding with new applications and new ways to use colour, media and finishing. The superb image quality, robust media latitude, flexible finishing options, modularity and server options of the Xerox® Colour 550/560 Printer, integrated with enterprise workflows, make it the perfect device for capturing new business, keeping more applications in-house.

Production printing with enterprise workflows at an affordable price.

Image quality, ease of use, productivity, media latitude, feeding and finishing options, plus world-class workflow solutions are at your fingertips. Grow your digital colour printing capabilities and reduce costs with the Xerox® Colour 550/560 Printer.



- **Brochures** – easily create professional, colourful brochures with productivity boosting inline folding
- **Presentations/Newsletters** – inline stapling and hole punching makes producing presentations and newsletters quick and easy
- **Reports** – inserted tabs keep annual reports and financial reports organised, while stapling and hole-punching keep pages secure
- **Posters** – expanded media range lets you run eye-catching posters on sturdy coated media – up to SRA3
- **Booklets** – automated folding and coated paper saddle stitching – even inserts – give booklets such as retail catalogues and photo books a professional finish that's fast too
- **Photo applications** – impeccable colour and photo-finish image quality will keep customers coming to you for all today's latest photo applications

Specifications for the Xerox® Colour 550/560 Printer

Resolution

- Print/Copy: 2400 x 2400 dpi
Scan: 200 x 200, 300 x 300, 400 x 400, 600 x 600
- Line Screens: 600, 300, 200 and 150 Clustered Dot, 200 Rotated Line Screen¹

Technology

- Load-while-run toner and paper capability
- Advanced Registration Technology for tighter control, ±1.2 mm along lead edge, front to back
- Custom paper set-up/alignment profiles
- Xerox® EA low melt toner
- Smart Kit® replaceable units for toners, drums, fuser, charge corotron, waste bottle, staples
- Active decurling for heavy-weight media

Integrated Scanner

- 250 sheet capacity
- 50 ppm colour/65 ppm b/w in copy mode; 50 ppm colour/ 80 ppm b/w in network scanning mode
- Originals up to A3 in weights from 38 – 105 gsm
- Duplex Automatic Document Feeder (DADF)

Productivity/Print Speeds

- Duty Cycle²: 300,000
- Average Monthly Print Volume³: 10,000 to 50,000 pages per month

Xerox® Colour 550/560 Colour

- A4
 - 50/60 ppm (64 – 105 gsm) uncoated
 - 35/43 ppm (106 – 176 gsm) uncoated, (106 – 150 gsm) coated
 - 25/30 ppm (177 – 300 gsm) uncoated, (151 – 300 gsm) coated
- A3
 - 25/30 ppm (64 – 105 gsm) uncoated
 - 19/21ppm (106 – 176 gsm) uncoated, (106 – 150 gsm) coated
 - 14/14 ppm (177 – 300 gsm) uncoated, (151 – 300 gsm) coated
- SRA3
 - 22/27 ppm (64 – 105 gsm) uncoated
 - 15/19 ppm (106 – 176 gsm) uncoated, (106 – 150 gsm) coated;
 - 12/12ppm (177 – 300 gsm) uncoated, (151 – 300 gsm) coated

Xerox® Colour 550/560 Black and White

- A4
 - 55/65 ppm (64 – 176 gsm) uncoated;
 - 35/43 ppm (177 – 300 gsm) uncoated, (106 – 176 gsm) coated
 - 25/30 ppm (177 – 300 gsm) coated
- A3
 - 27/33 ppm (64 – 176 gsm) uncoated
 - 19/21 ppm (177 – 300 gsm) uncoated, (106 – 176 gsm) coated
 - 14/14 (177 – 300 gsm) coated
- SRA3
 - 25/29 ppm (64 – 176 gsm) uncoated
 - 15/19 ppm (177 – 300 gsm) uncoated, (106 – 176 gsm) coated
 - 12/12 (177 – 300 gsm) coated

Paper

Flexibility/Weights

- Internal Trays 64-220 gsm uncoated and coated
 - Tray 1 500-sht SRA3, Tray 2 500-sht A3, Tray 3 870-sht A4, Tray 4 1140-sht A4
- Bypass 250-sht up to 300 gsm uncoated and coated
- Optional 2,000 sht HCF & OHCF (1 or 2 tray)

Capacity and Handling (A4)

- 3,260 sheets standard
- Maximum paper capacity: 7,260 sheets
- Two-sided printing: Automatic up to 176 gsm coated and uncoated from all trays. Manual up to 300 gsm from bypass tray

Feeding and Finishing Options

High-Capacity Feeder (HCF)

- A4, 2,000 sheets up to 220 gsm

Oversized High-Capacity Feeder (OHFC)

- 64 – 300 gsm uncoated
- 106 – 300 gsm coated
- 182 x 250 mm – B5 to SRA3/ 330 x 488 mm
- Auto duplex up to 176 gsm coated and uncoated
- Manual duplex up to 300 gsm
- One or two Tray Module: 2,000 sheets 4,000 sheets

Simple Catch Tray / Offset Catch Tray

- 500 sheet stacking

Advanced Finisher

- 500 sheet top tray
- 3,000 sheet stacker tray
- Multi-position stapling, coated and uncoated paper, up to 50 sheets
- Hole punching

Professional Finisher

- 500 sheet top tray
- 1,500 sheet stacker tray
- Stapling, coated and uncoated, up to 50 sheets
- Hole punching
- Bi-fold, saddle stitch booklet maker up to 15 uncoated sheets

Light Production Finisher

- 500 sheet top tray
- 3,000 sheet stacker tray
- Multi-position hole punching and stapling
- Stapling, coated and uncoated, up to 100 sheets
- 200 sheet interposer for pre-printed and full bleed sheets

Light Production Finisher with Booklet Maker – includes all features of the Light Production Finisher plus:

- Coated/uncoated bi-fold or saddle-stitch coated/uncoated booklet up to 25 sheets (100 imposed pages of 90 gsm media)

Light Production Finisher with Booklet Maker and Folder – includes all the features of Light Production Finisher & Booklet Maker plus:

- Optional Folding Module for tri-fold and Z-fold (A4 and A3)

Convenience Stapler

- Staple up to 50 sheets of 90 gsm media
- Foreign Interface Kit enables the connection of external devices such as audiotrons or coin-op devices. Performs in copy and print modes

Choice of Print Servers

- Xerox® Integrated Fiery® Colour Server
- FreeFlow® Print Server
- CX Print Server, Powered by Creo® Colour Server Technology
- EX Print Server, Powered by Fiery®

Electrical Requirements

- Printer 110 – 127 VAC/50/60 Hz
- Options: 100 – 240 VAC 50/60 Hz
- Optional Feeding/Finishing:
 - Each module requires 100 – 240 VAC, 50/60 Hz power

Printer Dimensions

Height 1,391.5 mm, Width 1,574 mm, Depth 787 mm

¹ Depending on Print Server

² Duty Cycle - Maximum volume capacity expected in any one month. Not expected to be sustained on a regular basis.

³ Average Monthly Print Volume - Expected regular monthly throughput.