

Veeam Monitor

for VMware Infrastructure

The new standard for performance monitoring, capacity planning and troubleshooting for your entire VMware Infrastructure

Veeam Monitor™ is an easy-to-deploy, framework-independent VMware monitoring solution designed to meet the day-to-day needs of VMware administrators. Built from the ground up specifically for the virtual world, Veeam Monitor provides support for troubleshooting and issue resolution, as well as trend reporting and capacity planning - equipping you to proactively manage Virtual Infrastructure 3 (VI3) system health and performance today and over the long term.

With Veeam Monitor, you can view both real-time and historical resource usage data for any virtual infrastructure object, as well as known infrastructure events, all on a single screen. This allows you to finally see your Virtual Infrastructure as a unified entity, not just a collection of isolated guests. Once you determine what is causing a specific performance issue, you can drill down into individual virtual machines, view their running processes, and even terminate some of the processes as needed - all from the Veeam Monitor interface. Or you can simply connect to the VM console to resolve the issue with the OS user interface - without leaving Veeam Monitor.

You can think of Veeam Monitor as essentially a "fire extinguisher" for your virtual infrastructure, but Veeam also offers solutions that can provide a "smoke detector system" leveraging the enterprise operations management system you already have. The Veeam/nworks connectors integrate virtual infrastructure monitoring into Microsoft System Center Operations Manager or HP Software Operations Manager. To learn more about these enterprise integration solutions, visit <http://www.veeam.com/vmware-esx-monitoring-hp-operations.html>.

Scalable architecture

Veeam Monitor is an enterprise-level application that enables multi-admin access to performance data without affecting ESX server and VirtualCenter performance or changing your access policies. It gathers all performance information into a SQL database, allowing users to access infrastructure-wide performance data and reporting as needed.

Analyze. Understand. Predict.

PERFORMANCE MANAGEMENT WITH VEEAM MONITOR

- Monitoring
- Alerting
- Capacity Planning
- Troubleshooting

Veeam Monitor is integrated with VMware VirtualCenter to provide cluster-aware monitoring of your virtual machines. Veeam Monitor supports and extends VMware's management framework, offloading the monitoring burden from VirtualCenter for enhanced VC performance. And with support for multiple VirtualCenters, Veeam Monitor shows performance data from your entire virtual infrastructure on a single screen - no matter how large your VMware deployment is.

Performance analysis

Veeam Monitor shows comprehensive resource consumption and workload data, all the way down to the individual virtual machine level. This speeds up analysis and troubleshooting, and helps you determine potential resource bottlenecks. Find out at a glance which components of your VMware infrastructure are the largest resource consumers - right now and over time.

Correlation of event and performance data

Veeam Monitor helps you to understand how virtual infrastructure activities affect your VM performance, and solve resource usage mysteries with real-time monitoring graphs. These graphs display known virtual infrastructure events, such as VMotion, snapshot creation and deletion, or backup activities, directly on the performance data.

Capacity planning and trend analysis

All resource usage views support consumption trending and capacity planning, providing you with the historical data you need to proactively plan the growth and deployment of new virtual machines. Generate detailed graphical Excel or HTML performance reports for any period of time to analyze resource consumption trends and plan capacity, or to use this information for chargeback. Reports include detailed graphs on CPU, Memory, Disk I/O, Network I/O and Swap usage for each ESX host, resource pool, cluster or the virtual machines they are running.

Advanced alerting and flexible alarms with modeling

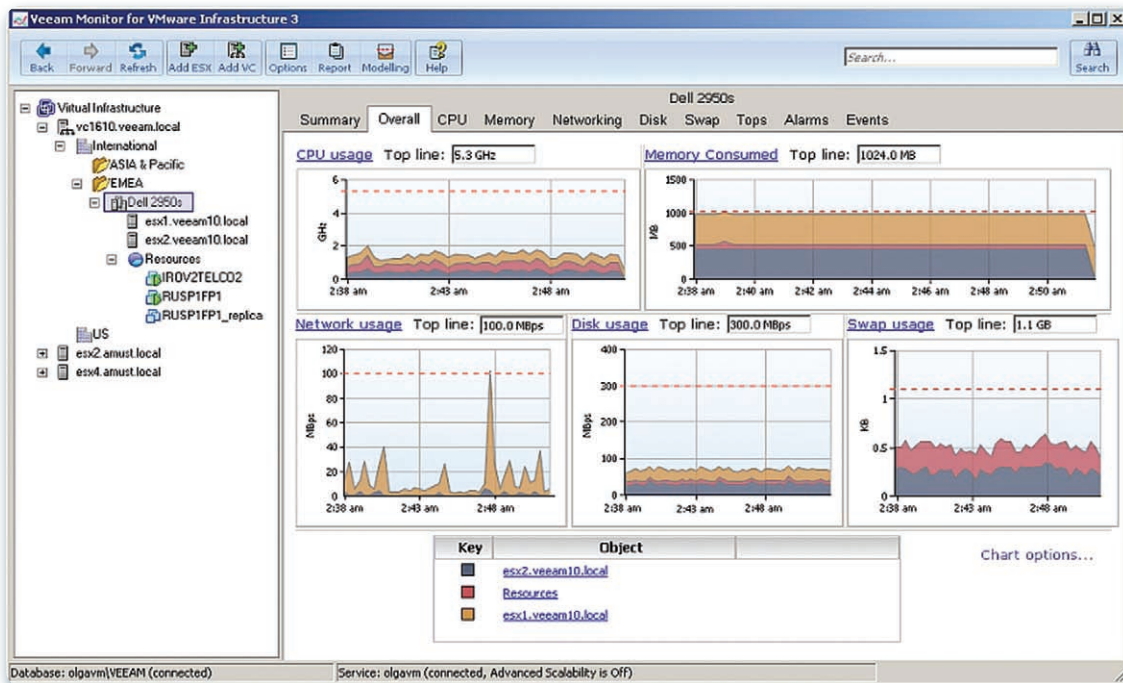
Veeam Monitor provides comprehensive alerting with custom alarms that can be based on many sources. You can easily set up e-mail notifications or SNMP traps for important events such as a given number of running VMs is exceeded,

VM heartbeat is lost, a specific event is generated by VirtualCenter etc. This allows for faster administrator response to critical issues, helping you to maintain better health and up-time of your virtual infrastructure.

And with the Alarm Modeling feature, you can quickly ensure that you have correctly set alarm benchmarks and thresholds by testing a newly created alarm using historical data.

User interface optimized for monitoring

The Veeam Monitor user interface was designed and optimized specifically for monitoring tasks. You can switch easily between different views to quickly find the VMware Infrastructure component you are looking for, or you can perform an integrated search. Drill down to an individual VM and find out what processes are running there, how much CPU and memory they are consuming, and even terminate some of the processes as needed. Or, you can simply connect to the VM console – all right from the Monitor user interface.



Veeam Monitor offers at-a-glance views of key performance metrics across multiple VirtualCenters.

System Requirements

VMware Infrastructure 3: ESX Server 3.x; VirtualCenter 2.x
 Windows XP (SP2 or later), Windows Vista,
 Windows Server 2003
 Microsoft SQL Server 2005 Express, or SQL Server 2005
 Microsoft .NET Framework 2.0 or later

Ordering information and Support

For pricing, please contact your Veeam Software reseller or send a sales inquiry at <http://www.veeam.com/salesinc.asp>

For technical support please visit <http://www.veeam.com/support.asp> or email support@veeam.com and our support representative will contact you promptly.

U.S. Headquarters
 6479 Reflections Drive,
 Suite 200
 Columbus, Ohio 43017

EMEA Headquarters
 Quatro House
 Lyon Way, Frimley Road
 Camberley, UK, GU16 7ER

Phone: +1-614-339-8200
 Fax: +1-614-675-9494

Phone: +44 (0) 1276-804-501
 Fax: +44-208-181-7555